

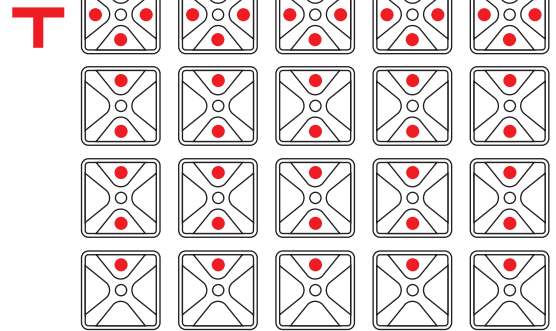
POPOP BOOTH SETUP INSTRUCTIONS



1. Remove Frame and Channel Bars from case.

2. Locate Magnetic "T" on Frame – this is the Top Front of your Booth. "T" is formed by 3 magnets along all the outer hubs. There is only one Row of "T" on your frame.

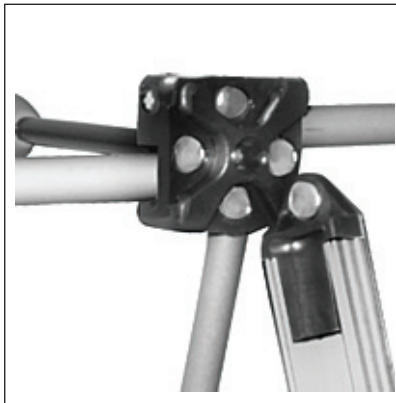
Top Front of your Booth



3. With both hands grasp the middle tubes of the frame and raise the frame up to full height. There are magnets that will lock the frame at full height.



4. Connect channel bars to frame by placing bar in its space allowing magnets to hold bars. On a 10 foot booth there are 21 bars, on an 8 foot booth there are 18 bars. Each set of black hubs requires 3 bars to go from floor to top of booth. When complete you will have vertical rows of bars on all front hubs and on the back of the booth only on the outside hubs.



5. Remove panels from case and unroll on floor using caution to not fold panel or allow anyone to walk on or place anything on the panels. The panels are cost about 70% of the cost of the total booth and should be treated with care allowing many years of repeated use.

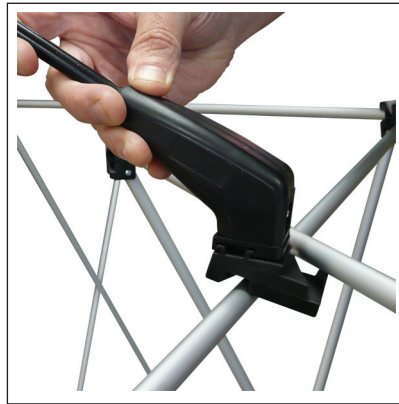
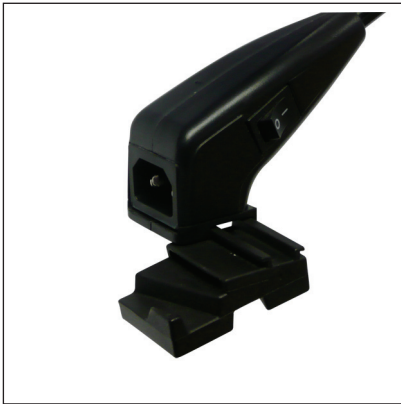
6. Panels hang on frame by connecting the upper hubs to the magnets on the top of each panel. Then the sides of each panel connect to the channel bars magnetically. Repeat for all panels.



7. Once all panels are hung, you can align the panels so text and graphics interconnect by the following procedure. To shift a panel up or down, pull panel away from bars starting at bottom. Do not remove upper magnetic connection to hub. Lift up or pull down and reattach panel to bar. Upper magnets are designed to allow panel movement for alignment. You can shift one panel up and the next panel down to get almost perfect alignment.



8. Lights are hung from upper frame using the supplied black clips that have the channels that match the frame scissor angles.



POPUP BOOTH PACKING INSTRUCTIONS

- 1.** Remove lights and pack in case.
- 2.** Remove first graphic panel by grasping lower corners and pulling away from magnetic bars. Remove upper Hub Magnets and carefully lay face up on the floor making sure that there is nothing underneath. Roll from bottom to form a tube of about 12" in diameter. Place rolled panel inside case in panel area. Use hand to unroll panel inside case so it is expanded as much as possible. Repeat with other panels inserting them in the center of packed panels and expanding.
- 3.** Remove ALL Channel Bars from frame. Remember to remove bars from back of booth. DOUBLE CHECK to make sure all bars are removed
- 4.** Disconnect Frame magnets and frame will collapse to floor. If frame does not close after disconnecting the frame magnets DO NOT FORCE – there is still a channel bar connected which must be removed.
- 5.** Pack Channel Bars and Frame in case using extra packaging material to fill all empty spaces.

